
INTEGRATION JOINT BOARD DIRECTIONS: JULY 2023

**Report by Joint Director, Health and Social Care /
Chief Officer, Integration Joint Board**

Scottish Borders Council

31 August 2023

1 PURPOSE AND SUMMARY

- 1.1 This report provides an update to the Scottish Borders Council on the Directions issued to the Scottish Borders Council from the Health and Social Care Integration Joint Board in their July 2023 meeting.
- 1.2 The Direction issued by the Integration Joint Board in July 2023 relates to Surge planning for unscheduled care.

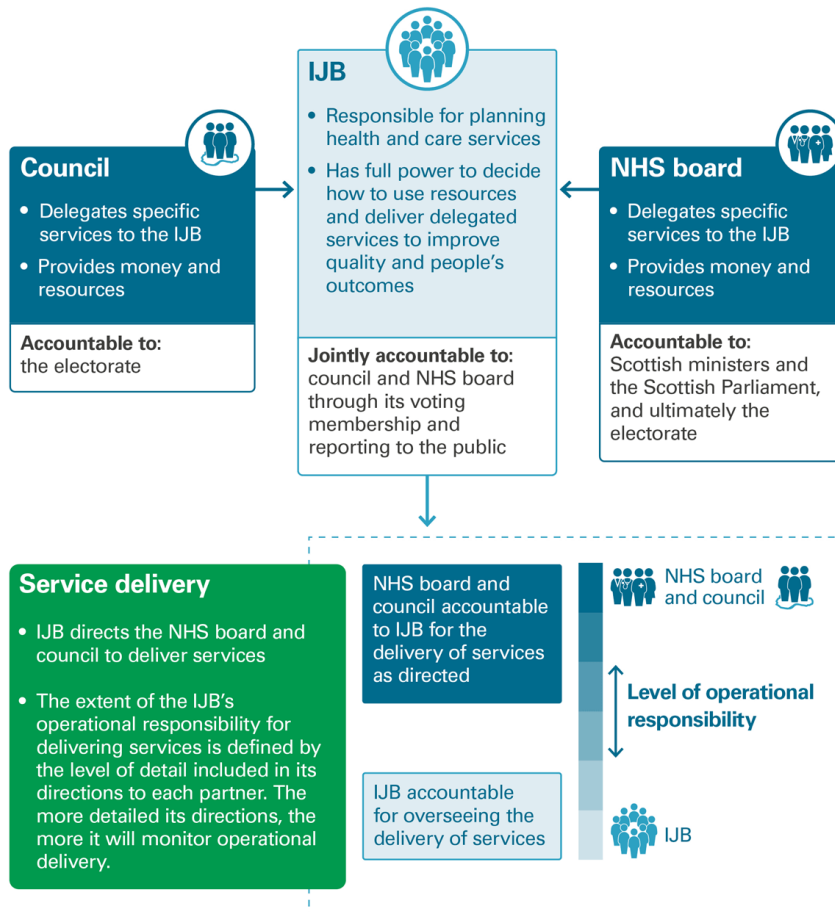
2 RECOMMENDATIONS

2.1 I recommend that the Council:-

- (a) Notes the Direction issued by the Health and Social Care Integration Joint Board to the Scottish Borders Council**

3 BACKGROUND

3.1 The Public Bodies (Joint Working) (Scotland) Act 2014 (the Act) outlines the arrangements for delegating services and resources from Local Authorities and Health Boards to Integration Joint Boards. These arrangements are summarised at a high level in the Audit Scotland diagram below.



Source: [What is integration? A short guide to the integration of health and social care services in Scotland](#), April 2018, Audit Scotland

- 3.2 Under these arrangements, the responsibility for decisions about the planning and strategic commissioning of all health and social care functions that have been delegated by the Council and the Health Board sit with the Integration Joint Board as a statutory public body.
- 3.3 The Act states that an Integration Joint Board must direct their partner authorities to carry out each function delegated to the Integration Joint Board.
- 3.4 Directions are a legal mechanism intended to clarify responsibilities requirements between partners. The primary purpose of Directions are to set a clear framework for the resourcing and operational delivery of the functions that have been delegated to the Integration Joint Board and to clearly convey the decision(s) made by the Integration Joint Board about any given function(s).

- 3.5 Within our local context, the "Integration Joint Board Directions Policy and Procedure" ensures that all Directions that affect the Scottish Borders Council are developed in partnership between the Integration Joint Board and Scottish Borders Council, so that when they are issued, these are supported and understood.
- 3.6 This update is included to ensure that Integration Joint Board directions issued to the Scottish Borders Council are shared with all Elected Members at Full Council so as to ensure that Elected Members are fully sighted, and as a matter of record.

4 DIRECTIONS ISSUED FOLLOWING IJB MEETING IN JUNE 2023

- 4.1 The 'Surge Planning' Direction is enclosed in Appendix 1.
- 4.2. This Direction relates to an ask from the Integration Joint Board jointly to the Scottish Borders Council and NHS Borders to commence the surge planning process for Winter, including pre-emptive closure of surge capacity in NHS Borders to support winter surge, and to develop and implement the following policies:
- Single assessment – to move to a policy where relevant health and social care professionals are able to undertake a social work assessment that is accepted and not then repeated
 - Home to assess – to move to a policy of discharging people home or to a homely setting to allow them to recover and support their re-enablement prior to assessing their needs
 - Strengthened engagement with the third sector – to ensure that we are maximising the opportunities in close working with the third sector relating to urgent and unscheduled care
 - Communications – promoting community supports (including but not exclusively local primary care services (Right Care, Right Time, Right Place), social prescribing, Self Care, What Matters Hubs, Self Directed Support, Carers Supports)
- 4.3 In addition, the Direction recognises that surge planning now needs to occur throughout the year rather than just in Winter.
- 4.4 This follows escalation of the need to commence surge planning early by the Health and Social Care Partnership Joint Executive to the Integration Joint Board. The Joint Executive comprise members of the Council Management Team and NHS Borders Executive Team.
- 4.5. Following the Direction, a surge planning workshop was held on the 31st July 2023 between Scottish Borders Council and NHS Borders Officers to consider the modelling for winter / surge, and plan appropriate mitigations in line with the work underway by the HSCP Urgent and Unscheduled Care Programme Board and the additional funded social care capacity for older adults that was agreed as part of the Council and Integration Joint Board budget setting processes. The plans are now being further developed by Officers with a view to confirming the surge plan shortly.

- 4.6. A further update on progress against this Direction will be brought to the Integration Joint Board, to the Council and to the NHS Borders Board relating to the Winter / surge planning process for Health and Adult Social Care / Adult Social Work.

5 IMPLICATIONS

5.1 Financial

There are no costs attached to any of the recommendations contained in this report.

5.2 Risk and Mitigations

The purpose of the Direction was to appropriately reduce risk relating to the increased pressure faced across the Health and Social Care system during periods of surge, such as Winter. The update paper to Council following confirmation of the surge plan will outline the approach that will be undertaken to reduce these risks.

5.3 Integrated Impact Assessment

- (a) An Integrated Impact Assessment will be undertaken for the work of the Urgent and Unscheduled Care Programme.

5.4 Sustainable Development Goals

The Integration Joint Board works to achieve the following Sustainable Development Goals:

- Goal 3: Ensure healthy lives and promote well-being for all at all ages
- Goal 5: Achieve gender equality and empower all women and girls
- Goal 8: Promote inclusive and sustainable economic growth, employment and decent work for all
- Goal 10: Reduce inequality within and among countries
- Goal 16: Promote just, peaceful and inclusive societies
- Goal 17: Revitalise the global partnership for sustainable development

5.5 Climate Change

There are no related climate impacts associated with this report.

5.6 Rural Proofing

n/a

5.7 Data Protection Impact Statement

- There are no personal data implications arising from the proposals contained in this report.

5.8 Changes to Scheme of Administration or Scheme of Delegation

No changes to the Scheme of Administration or Scheme of Delegation are required.

6 CONSULTATION

- 6.1 The Chief Executive, Director (Finance & Corporate Governance), the Monitoring Officer/Chief Legal Officer, the Chief Officer Audit and Risk, the

Director (People Performance & Change), the Clerk to the Council and Corporate Communications have been consulted.

Approved by

Name **Chris Myers** **Title** **Joint Director, Health and Social Care**

Author(s)

Name	Designation and Contact Number
Chris Myers	Joint Director, Health and Social Care / Chief Officer Integration Joint Board

Background Papers:

Scottish Borders Health and Social Care Integration Joint Board 19 July 2023 Surge planning paper. Available from:

<https://scottishborders.moderngov.co.uk/documents/s76296/Item%205.2%20-%20Surge%20Planning.pdf>

Scottish Borders Health and Social Care Integration Joint Board Directions Policy and Procedure. Available from 12 December 2021 papers (page 21):

<https://scottishborders.moderngov.co.uk/documents/s61363/IJB%2015.12.21%20Agenda%20pack.pdf#page=21>

Directions from integration authorities to health boards and local authorities: statutory guidance. Available from: <https://www.gov.scot/publications/statutory-guidance-directions-integration-authorities-health-boards-local-authorities/>

Previous Minute Reference: n/a

Note – You can get this document on tape, in Braille, large print and various computer formats by contacting the address below.

Contact us at Chris Myers chris.myers@scotborders.gov.uk

**Appendix 1 –
Surge Planning Direction**

DIRECTION FROM THE SCOTTISH BORDERS INTEGRATION JOINT BOARD
 Direction issued under S26-28 of the Public Bodies (Joint Working) (Scotland) Act 2014

Reference number	SBIJB-190723-2
Direction title	Surge Planning
Direction to	Scottish Borders Council and NHS Borders
IJB Approval date	Direction approved at IJB on 19 July 2023
Does this Direction supersede, revise or revoke a previous Direction?	No
Services/functions covered by this Direction	Unscheduled care delegated and set aside services
Full text of the Direction	<p>To commence the surge planning process for Winter, including pre-emptive closure of surge capacity to support winter surge, and to develop and implement the following policies:</p> <ul style="list-style-type: none"> - Single assessment and Home to Assess; - Strengthened engagement with the third sector in unscheduled care, and - Communications which promote community supports <p>It is expected that an Integrated Impact Assessment is developed and acted upon as part of the planning process, and that this is reported from the Urgent and Unscheduled Care Programme Board routinely to the HSCP Joint Executive, and to the IJB by escalation/exception.</p>
Timeframes	<p>To start by: With immediate effect</p> <p>To conclude by: December 2023</p>
Links to relevant SBIJB report(s)	July IJB papers: https://scottishborders.moderngov.co.uk/ieListDocuments.aspx?CId=218&MIId=6536&Ver=4
Budget / finances allocated to carry out the detail	<p>It is expected that in the first instance the Health and Social Care Partnership work to deliver better value from the existing resource that has been invested, including if there is potential for better value to be delivered through redeployment of existing resource, including the transfer of resource between the Delegated Budget and the Set Aside budget for directed hospital services.</p> <p>There are no costs envisaged attached to this direction, however it is recognised that there is a chance that investment may be required. Any requirement for major investment will need to be escalated to the IJB for decision.</p>
Outcomes / Performance Measures	<p>It is expected that the proposal will impact positively on all nine National Health and Wellbeing Outcomes.</p> <p>In addition, the surge plan should help reduce admissions to hospital, length of stay and deconditioning in hospital settings, and promote independence for those people who need care out with the hospital setting. In turn, it is also expected that this will reduce the need and</p>

Insert Committee name – date of meeting

	demand for social care from the hospital system, and the number of delayed discharges.
Date Direction will be reviewed	Progress to be reported to the Integration Joint Board in November 2023, and by exception / escalation by the HSCP Joint Executive

Insert Committee name – date of meeting